

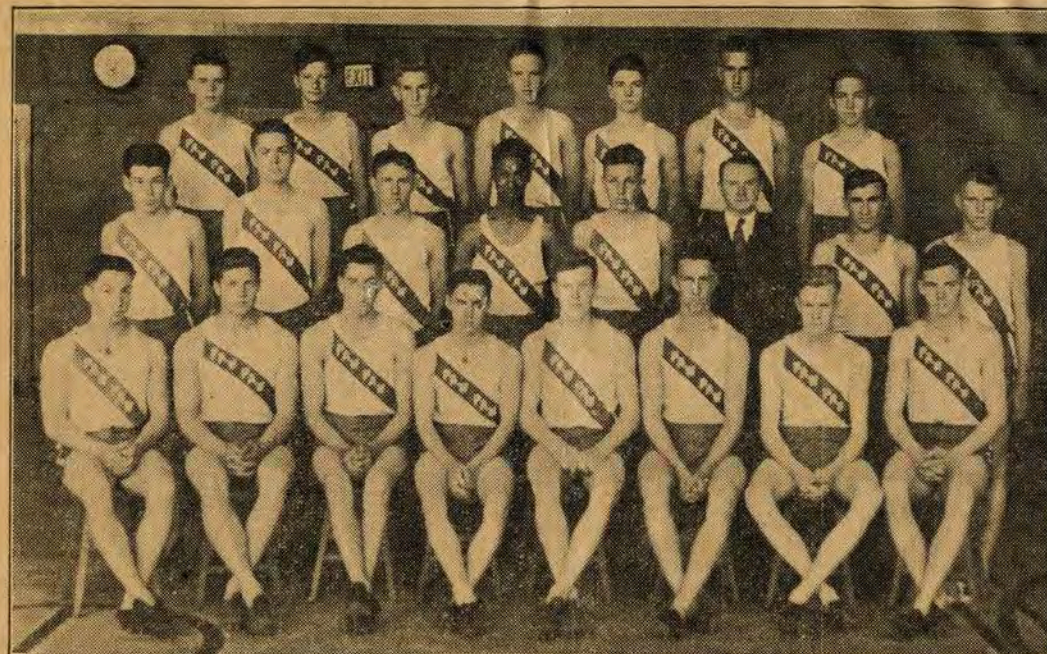
PAW PAW HIGH SCHOOL



SCHOOL SPORTS



Track Squad - Paw Paw High School - May 27, 1932



TRACK SQUAD, PAW PAW REDSKINS, 1932

Photo by Myers

Front Row, left to right—Jennings, Paynich, Brockway, Holcomb, (Capt.), Brennan, Baxter, Sowle, Mather. Second Row—Smith, Spicer, Lula, Ampey, Andrews, Coach Emmert, Mearing, R. Slisz. Back Row—E. Slisz, Timkovich, Alden, Madison, Warner, Lanphear, Loveland.



Left to Right: Smith, Spencer Mather, Holcomb, James Jennings



Left to Right: Frank Spicer, Spencer Mather, Holcomb, James Jennings



Paw Paw High School Football Squad - October 3, 1931

- Myers -
Paw Paw

PAW PAW READY FOR COUNTY CHAMPIONSHIP BATTLE AT SOUTH HAVEN



Back row, left to right--Fisk Smith, Assistant Coach Wolfe, Irwin Brockway, Kirby, Ampey, Areaux, Locklin, Coach Bryant Emert, and Slisz.

Front row Mearing, Sowle, Paynich, Root, Bush, Rock, Captain Buskirk, Jennings, Baxter, Stevens, Wang Bennett and Brennan.

Paw Paw's gridiron squad will travel to South Haven Friday for a Van Buren county championship game with Coach Baer's Big Five champions. The game is to start at 3:30 Eastern Standard time. Originally, the contest was scheduled for Saturday. In 1929 and 1930, unusually bad Thanksgiving day weather forced cancellation of the game. In 1928, South Haven won, 6 to 0.



**James Jennings, PPHS Football
Team Captain - 1933 Season**



**James Jennings in early "Letter Sweater"
The four stripes signify lettering four years,
while the star denotes team captain.
Photo appears to have been taken around the
time of Tyler Field stone fence construction.**

PAW PAW-DOWAGIAC DUAL MEET RECORDS (1929, 1930 & 1935)

100 Yard Dash (10.2 sec.) - - - Smith, Paw Paw, 1935
 220 Yard Dash (23.1 sec.) - - - Smith, Paw Paw, 1935
 120 Yd. H.Hurdles (17.7 sec.) - Darr, Dowagiac, 1935
 120 Yd. L.Hurdles (14.8 sec.) - Lyman, Dowagiac, 1930
 200 Yd. L.Hurdles (25.7 sec.) - Read, Paw Paw, 1935
 220 Yd. L. Hurdles - - - - - No record
 440 Yard Dash (56 sec.) - - - - Linderman, Dowagiac, 1929
 Half Mile (2 min. 10 sec.) - - Valdes, Dowagiac, 1929
 Mile Run (4 min. 57.5 sec.) - - Mott, Dowagiac, 1935
 High Jump (5 ft. 7 in.) - - - - Cisco, Dowagiac, 1935
 Broad Jump (21 ft. 3 in.) - - - Smith, Paw Paw, 1935
 Shot Put (44 ft. 2 in.) - - - - Frontczak, Dowagiac, 1935
 Pole Vault (9 ft. 6 in.) - - - Sowle & Otten, Paw Paw, 1930; Cisco & Smith,
 Dowagiac, 1935
 Javelin (152 ft. 5 in.) - - - - Starzec, Paw Paw, 1930
 Discus (98 ft. 8 in.) - - - - Easley, Dowagiac, 1930
 Half Mile Relay (1:37.8) - - - Paw Paw (Cswalt, Lula, Read, Smith) 1935

PAW PAW-ALLEGAN MEET RECORDS (1929-35)

100 Yard Dash (10.4 sec.) - - - Smith, Paw Paw, 1934 and 1935
 220 Yard Dash (23.1 sec.) - - - Smith, Paw Paw, 1935
 120 Yd. H.Hurdles (18.1 sec.) - Read, Paw Paw, 1935
 110 Yd. L.Hurdles (13.5 sec.) - Barrett, Allegan, 1935
 120 Yd. L.Hurdles (14.1 sec.) - Jennings, Paw Paw, 1934
 220 Yd. L.Hurdles (28.2 sec.) - Jennings, Paw Paw, 1933
 440 Yard Dash (56.4 sec.) - - - McLean, Allegan, 1933
 Half Mile (2 min. 11.8 sec.) - Brockway, Paw Paw, 1933
 Mile Run (4 min. 55 sec.) - - - Krisztof, Paw Paw, 1929
 High Jump (5 ft. 6 in.) - - - - Sowle, Paw Paw, 1932
 Broad Jump (21 ft. 4 in.) - - - Smith, Paw Paw, 1935
 Shot Put (49 ft. 1 in.) - - - - Paynich, Paw Paw, 1933
 Pole Vault (11 ft.) - - - - Sowle, Paw Paw, 1932
 Javelin (143 ft. 7 in.) - - - - Paynich, Paw Paw, 1931
 Discus (110 ft. 4 in.) - - - - McNutt, Allegan, 1929
 Half Mile Relay(1:37.2) - - - - Allegan (Humm, Bussey, Plotts, Conlee) 1933

PAW PAW-STATE HIGH MEET RECORDS (1928, 1930-34)

100 Yard Dash (10.5 sec.) - - - Rock, Paw Paw, 1931; Smith, Paw Paw, 1934
 220 Yard Dash (23.4 sec.) - - - Smith, Paw Paw, 1934
 120 Yd. H.Hurdles (17.9 sec.) - Jennings, Paw Paw, 1934
 120 Yd. L.Hurdles (14.6 sec.) - Holcomb, Paw Paw, 1931
 220 Yd. L.Hurdles (27.7 sec.) - Holcomb, Paw Paw, 1932; Jennings, Paw Paw, 1934
 440 Yard Dash (55.3 sec.) - - - McGuire, Paw Paw, 1931
 Half Mile (2 min. 10.6 sec.) - McGee, State High, 1934
 Mile Run (4 min. 59 sec.) - - - Krisztof, Paw Paw, 1928
 High Jump (5 ft. 5 in.) - - - - Sowle & Brennan, Paw Paw, 1932
 Broad Jump (20 ft. 11½ in.) - - Smith, Paw Paw, 1934
 Shot Put (46 ft. 6½ in.) - - - Paynich, Paw Paw, 1933
 Pole Vault (11 ft. 2½ in.) - - Sowle, Paw Paw, 1932
 Javelin (142 ft.) - - - - - Hoger, Paw Paw, 1928
 Discus (102 ft. 3 in.) - - - - Paynich, Paw Paw, 1931
 Half Mile Relay (1:38.4 sec.) - State High (Kriehlick, Carter, Tanner, Russell)
 1932

PAW PAW INTERCLASS TRACK AND FIELD RECORDS

100 Yard Dash (10.5 sec.) - - - Alan Smith, 1935
 220 Yard Dash (24.6 sec.) - - - Alan Smith, 1935
 * 120 Yd. H.Hurdles (16.9 sec.) - James Jennings, 1934
 * 120 Yd. L.Hurdles (15.1 sec.) - James Jennings, 1932
 110 Yd. L.Hurdles (14.6 sec.) - Milton Read, 1935
 440 Yard Dash (58.7 sec.) - - - Spencer Mather, 1932
 Half Mile (2 min. 18.8 sec.) - Richard Brockway, 1933
 Mile Run (5 min. 18 sec.) - - - Ralph Wheaton, 1930
 High Jump (5 ft. 4 3/4 in.) - - David Warner, 1933; Wilber Andrews, 1933
 Broad Jump (20 ft. 11 in.) - - Alan Smith, 1935
 Pole Vault (10 ft.) - - - - - Richard Sowle, 1930
 Shot Put (47 ft. 4 in.) - - - - Paul Paynich, 1933
 Javelin (156 ft. 6 in.) - - - - John Starzec, 1930
 Discus (99 ft. 10 1/2 in.) - - - - Richard Miller, 1930
 Half Mile Relay (1:43.6) - - - Juniors (Warner, Lula, Read, Smith) 1934

TYLER FIELD TRACK AND FIELD RECORDS

100 Yard Dash (10.4 sec.) - - - Smith, Paw Paw, 1934 and 1935
 220 Yard Dash (23.1 sec.) - - - Smith, Paw Paw, 1935
 * 120 Yd. H.Hurdles (16.9 sec.) - Jennings, Paw Paw, 1934
 * 120 Yd. L.Hurdles (14.1 sec.) - Jennings, Paw Paw, 1934
 110 Yd. L. Hurdles (13.5 sec.) - Barrett, Allegan, 1935
 220 Yd. L.Hurdles (27.7 sec.) - Holcomb, Paw Paw, 1932
 440 Yard Dash (56.8 sec.) - - - Carter, State High, 1932
 Half Mile (2 min. 14 sec.) - - Brockway, Paw Paw, 1932
 Mile Run (4 min. 59.1 sec.) - - Krisztof, Paw Paw, 1929
 High Jump (5 ft. 6 in.) - - - - Thompson, Paw Paw, 1929; Sowle, Paw Paw, 1932
 Broad Jump (21 ft. 4 in.) - - - Smith, Paw Paw, 1935
 Pole Vault (11 ft. 2 1/4 in.) - - Sowle, Paw Paw, 1932
 Shot Put (47 ft. 4 in.) - - - - Paynich, Paw Paw, 1933
 Javelin (156 ft. 6 in.) - - - - Starzec, Paw Paw, 1930
 Discus (108 ft. 6 in.) - - - - Stowman, Bangor, 1927
 Half Mile Relay (1:38.4) - - - State High (Krieliick, Carter, Tanner, Russell) 1932

VAN BUREN COUNTY TRACK AND FIELD RECORDS

100 Yard Dash (10 sec.) - - - - Smith, Paw Paw, 1935
 220 Yard Dash (22.8 sec.) - - - Smith, Paw Paw, 1935
 120 Yd. H.Hurdles (17.2 sec.) - Sandstrom, South Haven, 1928
 120 Yd. L.Hurdles (14.6 sec.) - Schulman, South Haven, 1930
 220 Yd. L.Hurdles (27.5 sec.) - Littell, South Haven, 1928
 200 Yd. L.Hurdles (26.2 sec.) - Read, Paw Paw, 1935
 High Jump (5 ft. 10 in.) - - - Decker, Paw Paw, 1906
 Broad Jump (22 ft. 1 in.) - - - Smith, Paw Paw, 1935
 440 Yard Dash (52.2 sec.) - - - Minshall, Hartford, 1925
 Half Mile (2 min. 10 sec.) - - - Dopp, Lawrence, 1919
 Mile Run (4 min. 48.7 sec.) - - Darling, South Haven, 1932
 Pole Vault (10 ft. 9 in.) - - - Bishop, Bangor, 1929
 Shot Put (46 ft. 5 in.) - - - - Paynich, Paw Paw, 1933
 Javelin (155 ft. 7 in.) - - - - Green, South Haven, 1931
 Discus (114 ft. 6 in.) - - - - Thompson, Paw Paw, 1931
 Half Mile Relay (1:36.4) - - - South Haven (Runyan, Wank, Catron, Smith) 1933

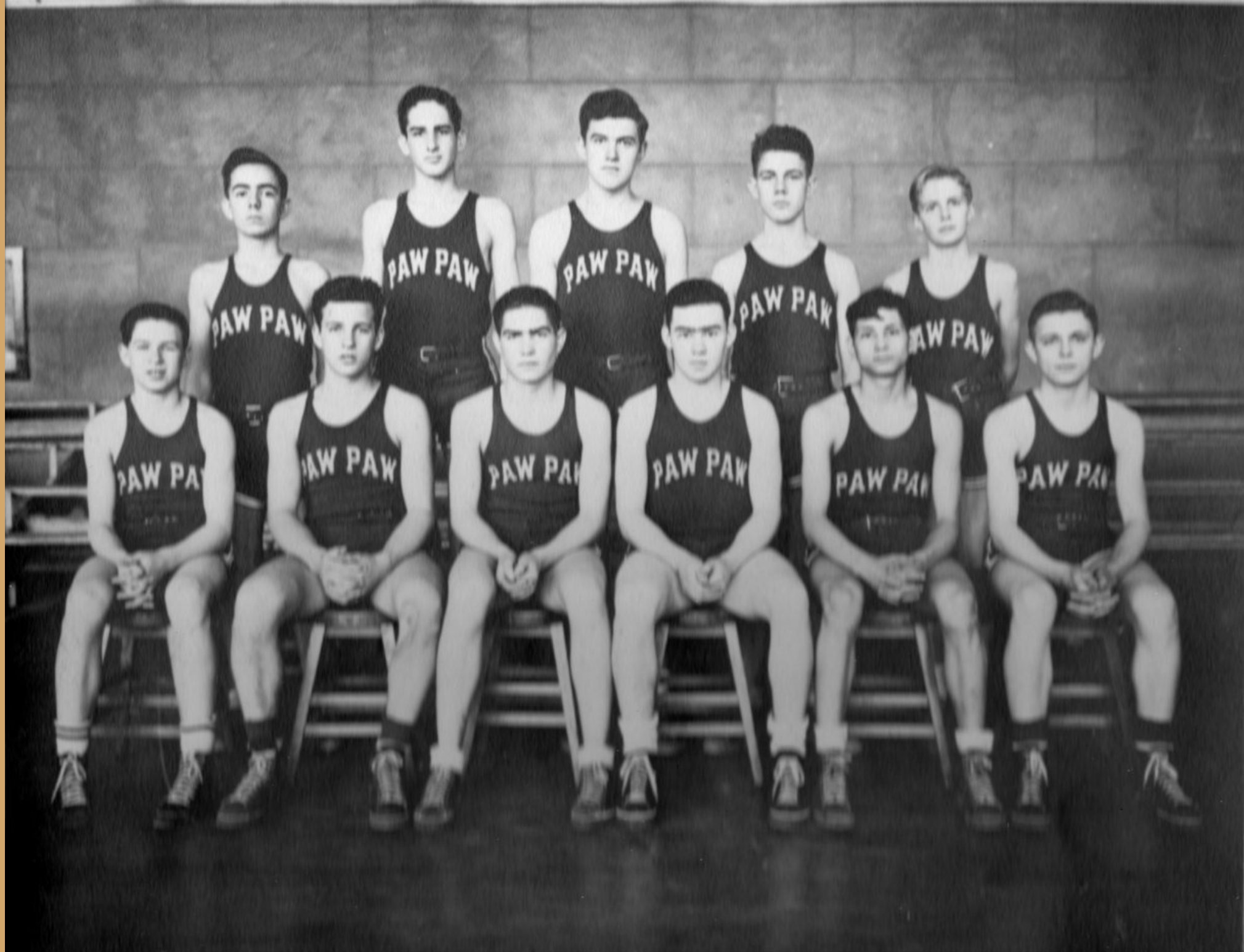
Records compiled by Coach Bryan Emmert, Paw Paw, Michigan



1939

TRACK TEAM

BACK:(left to right)R. Blocker,R. Mearing,T. Kizinski,
L. Lanphear,W. Woodman.
Second Row: Mr. Emmert,Coach,A.Wojciechowski,K.Ketchem,
E. Butus,J. Crook,W. Sherman,G. Jacher.
Front Row:H. Clow, F. Mc Donald,R. Brandt,D. Emery,
B. Colburn,A. Crampton,R. Benedict.

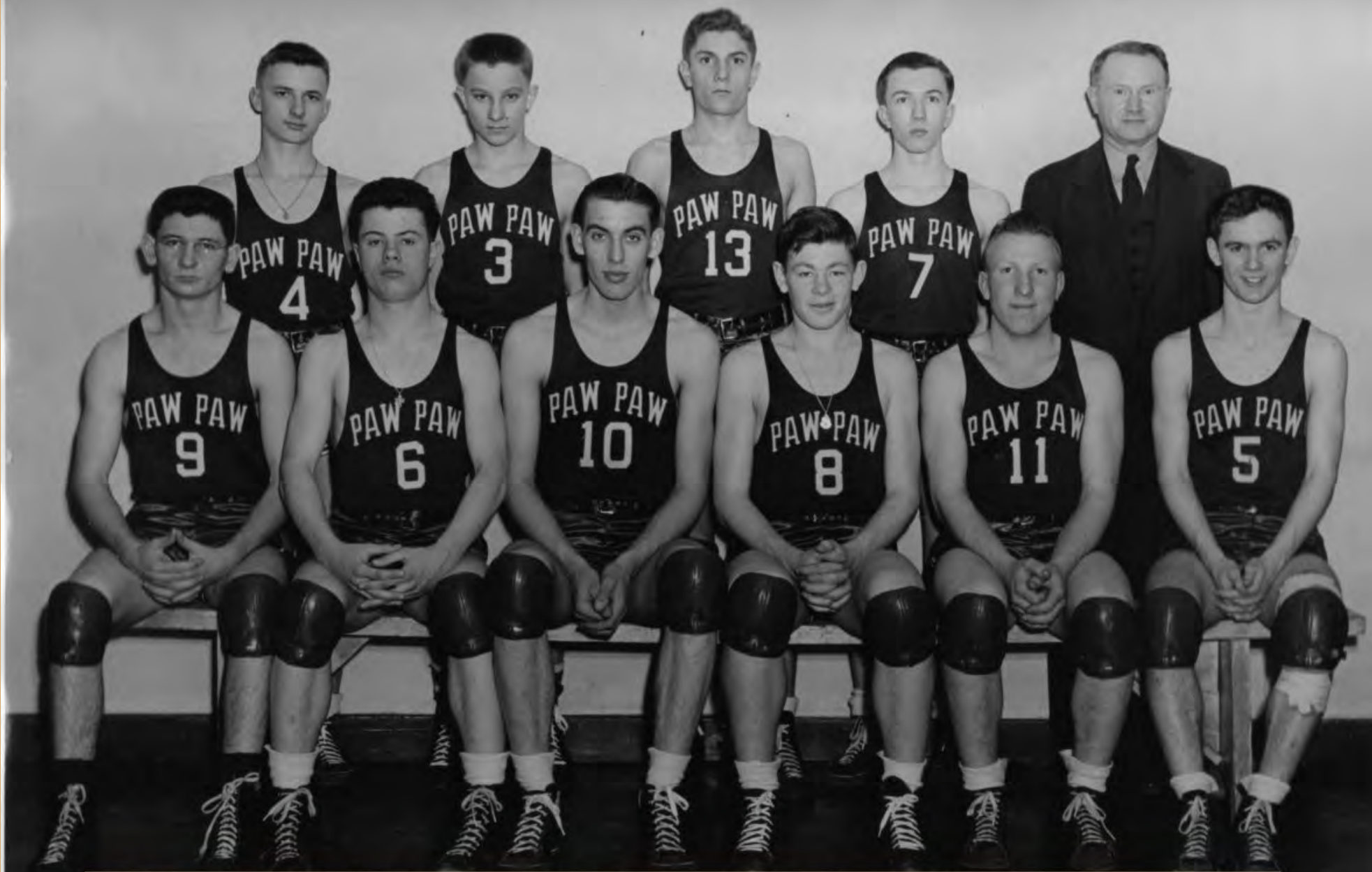


PPHS 1939 Basketball Team



Back Row-K.Scott, H.Weglarz, E.Rucinski, T.Chaffee, B.Carlson, N.Larson, F.Shank.
Second Row-Mr. Emmert, J.Boyne, M.Dudash, E.Torrance, A.Harvey, G.Eldred, B.Danger
First Row-D.Wragg, C.Breed, L.LaPine, B.Glidden, J.Coulson, L.Donovan. Absent-K.
Carlson, R.German, S.Jacher, J.Maske, D.Rothrock, V.Tate, G.Wood.

PPHS 1944 Track Team



Back Row-A. Gladysz, B. Hagen, L. LaPine, F. Racette, Mr. Emmert.
Front Row-M. Potter, L. Donovan, H. Hinckley, E. Rucinski, S. Jacher, D. Wragg.

PPHS 1944 Basketball Team



Back Row--B. Wilkinson, B. Duhan, G. Wood, C. Andrews, E. Meconi, P. Brusach, A. Gladysz.
Second Row--T. Chaffee, B. Geiger, N. Larson, S. Palasinski, B. Brown, E. Rucinski, J. Coulson. First Row--D. Wragg, L. LaPine, B. Braybrooks, L. Donovan, D. Stockwell, M. Potter.

PPHS 1944 Football



Back Row--D. Rumsey, D. Sprague, D. Whittington, E. Rucinski, H. Weglarz, S. Jacher,
Second Row--Mr. Emmert, L. LaPine, H. Clay, B. Burns, A. Lang, H. Hinckley. First Row--
D. Wragg, L. Donovan, R. Conolly, D. Holman, D. Stockwell, M. Potter. Absent--J. Coul-
son, K. Scott, G. Wood, C. Andrews, E. Meconi.

PPHS 1944 Baseball Team



Cheerleaders Joanne Cuddeback and Dona Carlson - 1944